

## WIX BROWN ELEMENTARY

23851 24 Avenue  
Langley, B.C. V2Z 3A3  
(604) 534-5633  
wixbrown.sd35.bc.ca

**Principal:**  
Mr. Kyle Featherstone

**Administrative Assistant:**  
Ms. Marlene Dickson



August 26, 2024

Dearest Wix-Brown families,

It is my pleasure to welcome you back to another school year! Whether you are returning to the school or joining us for the first time, I look forward to working collaboratively with you to support the success of all our Wix-Brown bears.

For those of you who don't know me, my name is Kyle Featherstone and I am the proud principal of Wix-Brown Elementary. This is my fourth year working at the school and I feel so honoured and privileged to support the students here at Wix and walk alongside families as we work together to achieve great things for our kids and our school community.

Please find some important information below regarding our first week back at school. Should you require any further clarification, please don't hesitate to reach out.

Please note: Ms. Dickson, our administrative assistant, is currently on leave. Ms. Norris is temporarily assisting in the office. You can direct any administrative questions to her: [mnorris@sd35.bc.ca](mailto:mnorris@sd35.bc.ca)

### **First Week Classes**

For the first week of school, students are engaged in a variety of learning opportunities and often work with different teachers and classes. We do **NOT** assign teachers for the year during the first week. This week is an opportunity for our school community to connect with each other, discuss schoolwide expectations, complete some initial academic assessments, and meet new friends and teachers.

***School will start on Tuesday, September 3 for students in grades 1-7 from 8:20 – 10:15.***

***If your child takes the bus, they will be picked up from the school at 10:15 and transported home.***

Students will line up at last year's line-up spots for the first day (and for the remainder of the week) for the most part, with a few exceptions. The schedule will be as follows:

<b><i>Teacher From Last Year</i></b>	<b><i>Teacher For First Week Back</i></b>	<b><i>Drop Off and Pick Up Location</i></b>
Ms. Sutherland	TBD	First day back (Tuesday) drop off and pick up at Ms. Sutherland's door; rest of the week will be at front office entrance (against gym wall near flags)
Ms. Kim	Ms. Olafson	Same spot as last year
Ms. Thirsk/Ms. Walters	Ms. Sipos	Same spot as last year
Ms. Skwarok	Ms. Skwarok	Same spot as last year
Ms. Wedgewood	Ms. Wedgewood	Same spot as last year
Ms. Steele	Ms. Steele	Same spot as last year
Ms. Jaheny	Ms. Jaheny	Same spot as last year
Ms. Blake	Ms. Blake	Same spot as last year
Ms. Stone	Ms. Stone	Same spot as last year
Ms. Allin	(Will be split between Ms. Stone and Ms. Jaheny – teachers will guide students on the first day)	Undercover area (teachers will guide on the first day)

After Tuesday, our regular bell schedule will be followed for the remainder of the week (and beyond):

<b>8:20</b>	Welcome Bell
<b>8:25</b>	Instruction Begins
<b>10:15</b>	Recess Starts
<b>10:30</b>	Recess Ends (Instruction Resumes)
<b>11:44</b>	Lunch Outside Time
<b>12:17</b>	Lunch Eating Time (Instruction Resumes)
<b>2:08</b>	Dismissal

## **New Students**

New students to our school in grades 1-7 will meet in the library on Tuesday morning at 8:25 for a quick introduction and orientation. Students can enter the school through our front office entrance and head to the library (someone will be there to direct/greet). They will then be placed into classes for the remainder of the week with their peers. Please note that this will **NOT** be their placement for the year. If, after Tuesday morning, you are not sure where your child will line up for the week, please reach out to myself or Ms. Norris in the office.

## **School Supplies**

A simple pencil case with essentials will suffice for the first week. School supplies can be brought in during the following week once classes are finalized. If you ordered Edupac school supplies through the PAC, they will be delivered to the school and your child will receive them once class placements are finalized. School supply lists for the year can be found on our school website [here](#). Please note: Kindergarten students do not purchase school supplies. Teachers place a bulk order and families pay a fee through SchoolCashOnline.

## **Class Placements**

Our school team spends a great deal of time thoughtfully and carefully placing students into classrooms for the school year. There are a wide variety of factors that are considered in these placements. Our hope is that students in grades 1-7 will know their class placement by the end of the day on Friday, September 6; however, if our enrolment numbers are not yet confirmed by the district, we will wait until the following week to place students in their final classes. Ms. Norris and I will communicate this information to you once we have a better idea of when our enrolment is secured.

## **Upcoming Dates**

Please find some important dates for the next two months below. I will be sending out bi-weekly blog posts (similar to last year) with important dates attached at the bottom. You can also access our district calendars [here](#) should you wish to see the year at a glance.

### ***September***

12	Parent Information Evening presented by the PAC, 6:00 PM in library.
19	Meet the Teacher evening, 4:30 PM – 5:30 PM and Harvest Festival (details to come from our PAC).

20	Terry Fox Run. Assembly at 1:00 PM. Colour Run outside from 1:15 PM – 1:45 PM.
27	National Day for Truth and Reconciliation recognized at school. Assembly at 10:30 AM.
30	No school (National Day for Truth and Reconciliation observed).

***October***

4	No school (School Improvement Day).
11	Student photos in AM.
11	Turkey Trot assembly at 1 PM.
14	No school (Thanksgiving).
25	No school (Professional Development Day).
30	Month-End Awards assembly at 1 PM.
31	Halloween Costume Parade at 10:30 AM in gym.

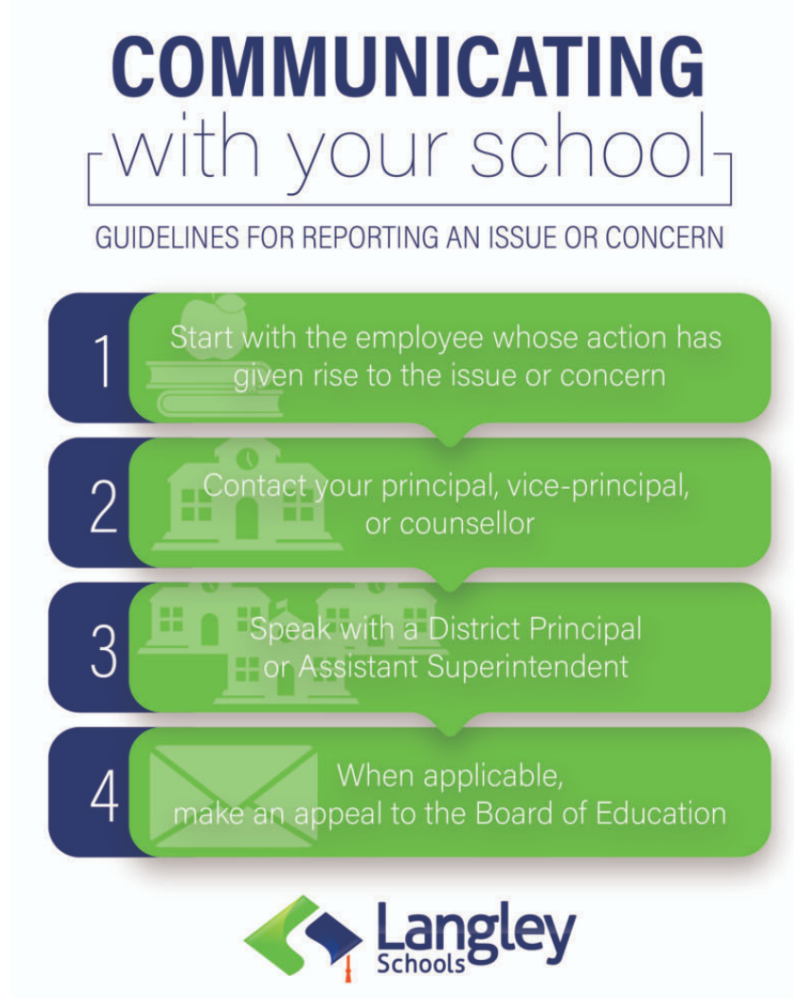
**Communicating with the School**

Communication between home and school is an important factor in student success. As a school, we value open and honest communication and strive to communicate any important information in a timely manner.

You can click [here](#) for a more detailed explanation that can be found on the school district website.

When an issue arises, it is always best to discuss it first with the staff member that the issue involves. In most instances, this discussion leads to a resolution and an understanding between home and school. If, after this discussion, you feel that the issue has not been resolved, I invite you to reach out to me so that we can come to a collaborative understanding.

The district has created a helpful infographic related to any issues or concerns that families may have:



### **Kindergarten Students**

New kindergarten students do not attend on the first day of school. All students who have registered for kindergarten should have received information this summer outlining the group that they will be in for the gradual entry into kindergarten this September. Ms. Norris will be sending you a website link to make an interview appointment with our kindergarten team. Please note that the first full day of kindergarten is Monday, September 18. Our enrollment numbers are constantly changing; therefore, we will not be placing kindergarten students into their classes until teachers have had a chance to conduct all interviews.

### **Breakfast Club**

Our Breakfast Club program will not run during our initial start-up at the school. Once up and running, breakfast will be available in the mornings before school from 8:00 until 8:20. Students can access the Breakfast Club through the doors in our undercover area.

## **Parking and Pick-Up/Drop-Off**

Parking lot safety in the mornings and after school is a top priority at Wix-Brown. Please read through these reminders carefully to ensure that we are keeping everyone safe at our school. If you are new to our community, please pay careful attention to the information below:

⇒ The bus lane is for busses only. Students cross from the drop-off lane through the bus lane in order to gain access to the school and walkway. This lane is not to be used for drop-off purposes.

⇒ The drive-thru lanes are for dropping off students. If you need to exit your vehicle for any reason, please park in a designated parking space or along the road to ensure that traffic moves smoothly. Our parking lot becomes congested when vehicles park in the drive-thru lanes, which becomes frustrating (and unsafe) for other drivers and for pedestrians.

All lanes at the front of the school are clearly marked. Please ensure that you adhere to our parking lot regulations in order to keep everyone safe, and to make sure that traffic can flow smoothly during pick-up and drop-off times.

## **Final Thoughts**

I am very much looking forward to a successful year for our school community. Please know that my door is always open, and I welcome any questions or feedback that can help to make our school a better place. Here's to a great year ahead!

With thanks,



Mr. Kyle Featherstone  
*Proud Principal*